

STINSEAL



APPLICATIONS

- Evidence
- Enclosures
- Tanks
- Vessels
- Utilities
- Medicine
- Measuring devices

MATERIAL

- Polyethylene HD
- Closing system

CHARACTERISTICS

- Indicative seal
- Operational length: 190 mm
- Self-locking
- Adjustable latch (wide type)
- Unsealable by cutting/breaking

MARKINGS

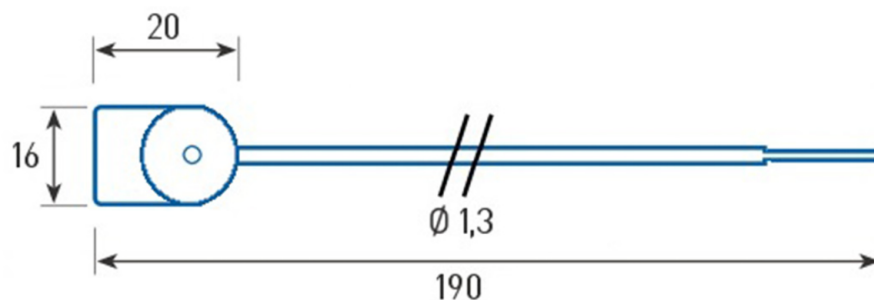
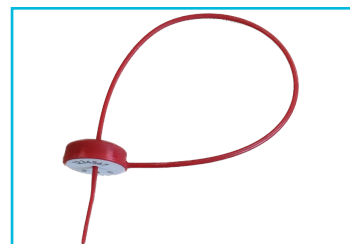
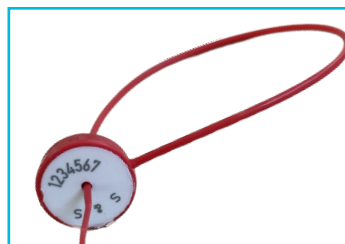
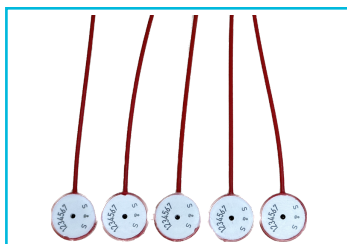
- Text
- Series

COLORS

- Blue
- Red

PACKAGINGS

- 1000 pieces/box
- Dimensions 360 x 490 x 320 mm
- Weight: 2,5 Kg



All dimensions in mm.